



Centriforce
Innovative products from recycled plastic

Rhino
MARKING & PROTECTION SYSTEMS

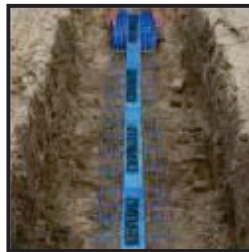
Locata® Underground Warning Mesh

Locata underground warning mesh is a high strength polypropylene mesh produced by Centriforce at its state-of-the art plant in Liverpool. The brightly colored mesh, which carries a printed warning on the central panel, is designed to alert excavators to the presence of buried utilities.



- Manufactured from virgin polymers
- Resistant to most soil types, including alkaline and acid soils
- Locata warning mesh offers a distinctive visual warning to excavators
- Custom Printed messaging on the central strip for easy recognition and warning available upon request
- Custom colors upon request
- Custom lengths, widths and thickness upon request
- Available in widths up to 42in
- Add on option Tracer wire
- Standard Sizes: (Length x Width)

100mm x 100mm	3.98in x 3.98in	55g/m2	0.12lb/m2
100mm x 200mm	3.98in x 7.87in	55g/m2	0.12lb/m2
100mm x 300mm	3.98in x 11.81in	55g/m2	0.12lb/m2



Installation

- Plastic underground warning mesh is normally installed at a specified distance directly above the utility to be marked so that future excavators will be aware of the cable or pipeline buried below.

Standards and approvals:

- High quality warning mesh manufactured and tested to conform to EN12613
- Approved and specified by utilities throughout the world
- Centriforce products are fully accredited to ISO9001, ISO14001 and OHSAS 18001

CENTRIFMESH_FACT • 6-2-17